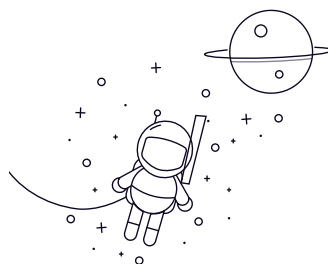


23200 Series



select	Consulta	Designación	Dimensiones principales (mm)				Clasificaciones de carga básicas (KN)		Velocidad limitada (rpm)	Peso Grasa petrolera (kg)
			d	D	B	rs min	Dinámico (Cr)	Estático (Cor)	Grasa petrolera (kg)	
23218	90	160	52.4	2	315	455	1800	2800	4.45	
23218K	90	160	52.4	2	315	455	1800	2800	4.32	
23218KW33C3	90	160	52.4	2	315	455	1800	2800	4.32	
23218W33C3	90	160	52.4	2	315	455	1800	2800	4.45	
23220	100	180	60.3	2.1	405	580	1600	2500	6.47	
23220K	100	180	60.3	2.1	405	580	1600	2500	6.28	
23220KW33C3	100	180	60.3	2.1	405	580	1600	2500	6.28	
23220W33C3	100	180	60.3	2.1	405	580	1600	2500	6.47	
23222	110	200	69.8	2.1	515	760	1400	2200	9.71	
23222K	110	200	69.8	2.1	515	760	1400	2200	9.43	
23222KW33C3	110	200	69.8	2.1	515	760	1400	2200	9.43	
23222W33C3	110	200	69.8	2.1	515	760	1400	2200	9.71	
23224	120	215	76	2.1	585	880	1300	2000	12.1	
23224K	120	215	76	2.1	585	880	1300	2000	11.7	
23224KW33C3	120	215	76	2.1	585	880	1300	2000	11.7	
23224W33C3	120	215	76	2.1	585	880	1300	2000	12.1	
23226	130	230	80	3	685	1060	1200	1900	14.3	
23226K	130	230	80	3	685	1060	1200	1900	13.9	
23226KW33C3	130	230	80	3	685	1060	1200	1900	13.9	
23226W33C3	130	230	80	3	685	1060	1200	1900	14.3	
23228	140	250	88	3	805	1270	1100	1700	18.8	
23228K	140	250	88	3	805	1270	1100	1700	18.2	
23228KW33C3	140	250	88	3	805	1270	1100	1700	18.2	

23200 Series

23228W33C3	140	250	88	3	805	1270	1100	1700	18.8
23230	150	270	96	3	935	1460	1000	1600	24.1
23230K	150	270	96	3	935	1460	1000	1600	23.4
23230KW33C3	150	270	96	3	935	1460	1000	1600	23.4
23230W33C3	150	270	96	3	935	1460	1000	1600	24.1
23232	160	290	104	3	1050	1660	960	1500	30
23232K	160	290	104	3	1050	1660	960	1500	29.1