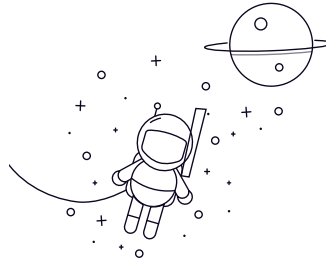


23900 Series



select	Consulta	Designación	Dimensiones principales (mm)				Clasificaciones de carga básicas (KN)		Velocidad limitada (rpm)	Peso Grasa petrolera (kg)
			d	D	B	rs min	Dinámico(Cr)	Estático (Cor)	Grasa petrolera (kg)	
23936	180	250	52	2	440	835	1200	1800	8.21	
23936K	180	250	52	2	440	835	1200	1800	7.95	
23936KW33C3	180	250	52	2	440	835	1200	1800	7.95	
23936W33C3	180	250	52	2	440	835	1200	1800	8.21	
23938	190	260	52	2	460	890	1100	1700	8.6	
23938K	190	260	52	2	460	890	1100	1700	8.34	
23938KW33C3	190	260	52	2	460	890	1100	1700	8.34	
23938W33C3	190	260	52	2	460	890	1100	1700	8.6	
23940	200	280	60	2.1	545	1100	1000	1600	12.1	
23940K	200	280	60	2.1	545	1100	1000	1600	11.7	
23940KW33C3	200	280	60	2.1	545	1100	1000	1600	11.7	
23940W33C3	200	280	60	2.1	545	1100	1000	1600	12.1	
23944	220	300	60	2.1	565	1170	930	1400	13.1	
23944K	220	300	60	2.1	565	1170	930	1400	12.7	
23944KW33C3	220	300	60	2.1	565	1170	930	1400	12.7	
23944W33C3	220	300	60	2.1	565	1170	930	1400	13.1	
23948	240	320	60	2.1	565	1190	840	1300	14	
23948K	240	320	60	2.1	565	1190	840	1300	13.6	
23948KW33C3	240	320	60	2.1	565	1190	840	1300	13.6	
23948W33C3	240	320	60	2.1	565	1190	840	1300	14	
23952	260	360	75	2.1	760	1580	770	1200	24	
23952K	260	360	75	2.1	760	1580	770	1200	23.3	

23900 Series

23952KW33C3	260	360	75	2.1	760	1580	770	1200	23.3
23952W33C3	260	360	75	2.1	760	1580	770	1200	24
23956	280	380	75	2.1	830	1750	710	1100	26.4
23956K	280	380	75	2.1	830	1750	710	1100	25.6
23956KW33C3	280	380	75	2.1	830	1750	710	1100	25.6
23956W33C3	280	380	75	2.1	830	1750	710	1100	26.4
23960	300	420	90	3	1110	2320	650	1000	40
23960K	300	420	90	3	1110	2320	650	1000	38.7